



Key Stage 4 Options Booklet

The guide to choosing your options for the 2028 examination series

Contents

Course	Page Number
Introduction from the Head Teacher	3
Course Selection	4
ELEMENT ONE- Core Subjects:	5
English	6
Mathematics	7
Combined Science	8
Religious Studies (RS)	9
Life Skills	10
Physical Education (PE)	11
ELEMENT TWO - Option Category 2 Subjects:	12
Computer Science	13
Modern Foreign Languages – French / Spanish	14
Geography	15
History	16
Separate Sciences: Biology	17
Separate Sciences: Chemistry	18
Separate Sciences: Physics	19
ELEMENT THREE- Option Category 3 Subjects:	20
Business	21
Creative iMedia	22
Drama	23
Economics	24
Film Studies	25
Fine Art	26
Food Preparation and Nutrition	27
Health and Social Care	28
Music Practice	29
Performing Arts - Dance	30
Product Design	31
Sociology	32
Sports Studies/Sport Science	33
Textiles	34
Princes Trust	35
Looking Ahead to Post 16	36
Careers	37

Introduction

Dear Student,

At The City of Leicester College, our Key Stage 4 curriculum is designed to give students the time to develop their Intellectual Character by acquiring the knowledge and understanding they need to attain the highest grades, while also providing a wide range of courses to study. For most students this is the time where they get to begin shaping their futures and it can be a process that causes anxiety and confusion. It is really important therefore that students and their parents take the time to read the information in this booklet and for the student to think carefully about the courses they opt for.

All students are required to continue with the **core subjects** of English, Mathematics, Science, Life Skills, IT, Religious Studies and Physical Education throughout Year 10 and Year 11.

Students are also required to opt for at least one of the key academic subjects; History, Geography, French, Spanish, Computer Science or Separate Sciences. These subjects lay the foundations for future study and/or training at the end of Key Stage 4 and are a key pillar in ensuring all students study a wide academic curriculum. Students will then study two more subjects from the list we offer. While there are no limits to which courses a student can study from this list, those students wishing to pursue further academic study, particularly in highly competitive areas such as law or medicine, may wish to consider selecting the English Baccalaureate or 'EBACC' route. The EBACC combination of courses is nationally recognised in giving students the strongest foundation for further academic study. To achieve, students need to achieve a grade 5 or above across the full combination of **English, Maths, Science, a Humanity (Geography or History), and a modern foreign language (French or Spanish)**. Success in these subjects can provide academic breadth and may be looked on favourably by colleges and universities.

For all students, the combination of courses that is most suitable will be different. It is essential therefore that careful decisions are made. Students will need to consider their enjoyment of the subject, their predicted grades and the direction their career may take them at the end of their courses. Students will spend many hours in school and at home studying each subject during Key Stage 4 and it is often how motivated they are that decides how successful they will be, so a wise choice now will set them up for success in the future.

We will be opening our school to Year 9 students and their parents/carers for our Options Evening on **26th February 2026** which is a crucial opportunity for students to find out more about the KS4 courses on offer for them. At this event students along with their parents/carers will be able to view presentations and ask questions of the subject specialists who run the different courses. In addition to this, students will have time to research and discuss courses in registrations, PSHE lessons and in their free time at home!

Each student will also be invited to an interview during the **week commencing 9th March 2026**. During this interview we will discuss the options choices and then later in the summer term, students will receive their personalised programme of study based on all the information provided to us and the courses that we are able to run.

The most important person in this process is the student themselves. While teachers and parents will want to give as much assistance as possible, it is important that students take time to think things through. I hope that all our students will give themselves the time and opportunity to be well-informed and reflect upon what kind of learning experiences they will enjoy, before they make their choices. Remember we are all here to help, so if you need anything please do ask.

It is traditional to say 'Good Luck' at this point, but my experience of this process is that success is more to do with effort and clear thinking. Having spent time amongst our students, I have no doubt each and every one of them will make outstanding choices!

Mr K Vernon (Head Teacher)

Course Selection

Your KS4 course will be a combination of courses from these three elements below. You will study **ALL of the subjects in Element One**. You then need to select **just THREE options from Elements Two and Three**. You **MUST** choose at least **ONE** course from **Element Two** and then your remaining two choices from **either Element Two and/or Element Three**.

Element One:

(CORE subjects – compulsory)

- English Language
- English Literature
- Maths
- Science (combined)
- Religious Studies (RS)
- Life Skills
- Physical Education (PE)

Element Two:

(EBACC subjects – students **MUST** choose **at least ONE** from here)

- Computer Science
- French
- Geography
- History
- Separate Sciences*
- Spanish

**students will need at least a grade 6 in Maths and Science to study this course.*

Element Three:

(The OPEN element – students can choose **up to TWO** from here)

- Business
- Creative iMedia
- Drama
- Economics
- Film Studies
- Fine Art
- Food Preparation and Nutrition
- Health and Social Care
- Music Practice
- Performing Arts - Dance
- Product Design
- Sociology
- Sport Studies / Sport Science
- Textiles
- Prince's Trust

Element One (core subjects):

General information

Over the next few pages you can read about the core subjects that are a part of the curriculum which every student will follow.

These are the subjects that make up our core curriculum offer:

- English
- Mathematics
- Combined Science*
- Religious Studies (RS)
- Life Skills
- Physical Education (PE)

In English, you will gain TWO GCSEs (English Language and English Literature) and in Mathematics, ONE GCSE.

*The majority of you will study **Combined Science**, studying key elements of Biology, Chemistry and Physics and gaining **two GCSEs**. However, if you choose the **Separate Science course** as an option from Element Two, then you will study Biology, Chemistry and Physics in more detail and gain **three GCSEs**.

You need to know what you will study during the core curriculum at KS4, so please read about these subjects in the first section of this booklet, just as carefully as every other subject on offer.

English

GCSE English language and English Literature

Literature Exam Board: AQA
Language Exam Board: Eduqas

English courses overview

English is comprised of two separate GCSE qualifications that are taught alongside each other over two years. You will work towards achieving a GCSE in both English Language and English Literature.

Throughout the two-year course, you will cover a variety of modern and classic literature, as well as a wide range of non-fiction texts from the 19th, 20th and 21st Centuries. The courses allow you to develop your own writing skills as well as your ability to analyse texts from many different contexts.

In Year 10 you will begin to develop the skills required for your GCSE and will study a wide range of GCSE texts including poetry, prose and drama to prepare you for your exams in year 11.

How is the course assessed?

English Literature

You will prepare for an exam at the end of the course over the two-year period. You will be assessed throughout the course in a series of mock exams. There will be two papers at the end of year 11 which will be completed under exam conditions. Paper 1 will examine Shakespeare and the 19th Century novel, Paper 2 will examine Poetry and Modern prose or drama.

English Language

You will prepare for an exam at the end of the course over the two-year period. You will be assessed throughout the course in a series of mock exams. There will be two papers at the end of year 11 which will be completed under exam conditions. Both papers will require you to analyse a range of literary non-fiction texts and to write creatively. You will also complete a speaking and listening assessment as part of this unit.

Is this course for you?

As English is a core subject, all students will be studying GCSE English Language and English Literature. All students will be entered for English Language and the majority will also be entered for English Literature.

What could these courses lead to?

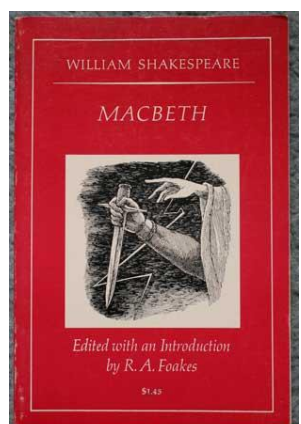
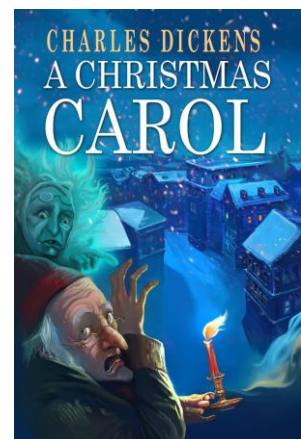
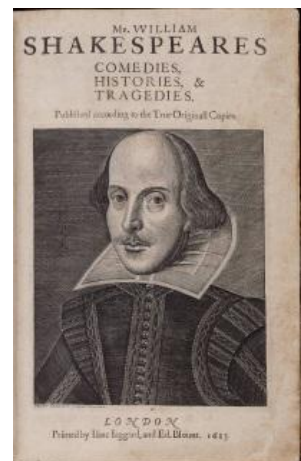
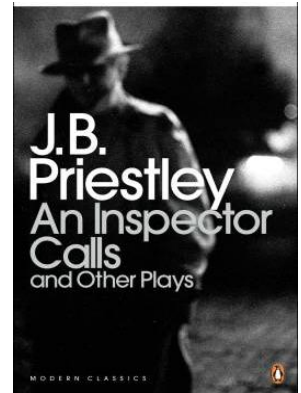
The course provides an excellent progression route into English Literature and Language/English Literature A Level as well as A Level Media. You will develop essential knowledge and skills including those involved in reading and analysing literature and creative writing. GCSE English Literature and Language aim to provide you with literacy skills that can be applied to a range of subjects.

Who can I contact for further information and support?

Ms S Coles, Head of Department: scoles@tcolc.aspirelp.uk

Miss Mirza, Head of Department: mmirza@tcolc.aspirelp.uk

Ms N Patel, Second in Department: npatel@tcolc.aspirelp.uk



Mathematics GCSE

Mathematics course overview

Mathematics is for everyone. It is diverse, engaging and essential in equipping students with the right skills to reach their future destination, whatever that may be. In terms of the curriculum, our programme focuses on the five key elements of Mathematics; Number, Algebra, Geometry and Proportion alongside a study of Statistics. All of these are covered throughout KS4 and are enriched with opportunities to develop the ability to solve unfamiliar problems. Our current scheme of learning has recently been updated to embrace the changes to more accurately reflect the focus of the national curriculum on fluency, reasoning and problem solving. There is also a strong focus on the quality of written communication meaning that students must show and explain all their working in a logical order.

How is the course assessed?

The GCSE is assessed at the end of Year 11 with 100% Written Examination. There is no coursework in GCSE Mathematics.

There are two tiers: Foundation (awards grades 1-5) and Higher (awards grades 4-9). There are three written papers:

- Paper 1 Calculator 100 marks
- Paper 2 Non-Calculator 100 marks
- Paper 3 Calculator 100 marks

All three question papers cover a mix of skills and topic areas and have a mix of question styles. There are short, single mark skills questions, questions that require mathematical reasoning and multi-step problems to solve.

Throughout Year 10 and 11 students will be assessed by their teachers through half termly assessments, exit tickets and homework tasks in addition to calendared Mocks that will emulate the final exams at the end of Year 11.

Students are expected to bring the correct equipment to lessons. This includes pen, pencil, ruler, protractor, compass and scientific calculator.

TCOLC Approach

At TCOLC, we have designed the scheme of learning to support and enable students to engage with, enjoy and succeed in maths.

In Mathematics, students are set according to their ability and their tier of entry. These sets are regularly reviewed to ensure students are accessing the course content. We believe in teaching students according to their stage of mathematical learning. This approach means we are able to cater to the individual needs of each student and stretch students no matter what their age or current ability is. Some students may get the opportunity to participate in the National team and individual UK Maths challenges.

In addition to the Mathematics GCSE, we will be offering students of high ability, the opportunity to study an extra qualification. The Level 2 Certificate in Further Maths is equivalent to a GCSE qualification with a strong emphasis on the algebraic skills and also introduces calculus and matrices. required. It also introduces two new concepts in Mathematics, calculus and matrices. This course allows the strongest students to really excel and provide an excellent platform from which students can go on to study both Mathematics and Further Mathematics at A-Level.

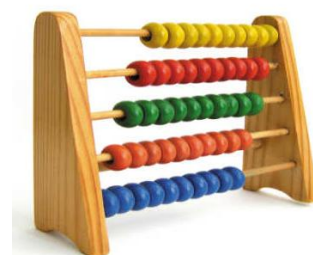
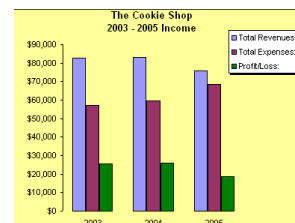
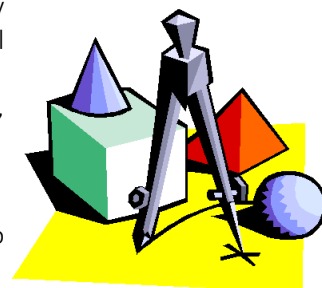
What could this lead to?

Mathematics graduates can be found working in just about every industry, however those popular with graduates include: accountancy, banking, medicine, insurance, finance, education, health and other commercial and management careers. There are also rapidly-growing opportunities in the technology sector.

Who can I contact for further advice or support?

Ms K Lewis, Head of Department: kewis@tcolc.aspirelp.uk Ms Devine-Stevens, Second in Department tdevine-stevens@tcolc.aspirelp.uk Mr S Lunat, Second in Department: slunat@tcolc.aspirelp.uk

Exam Board: OCR
Course Code: J560



Combined Science: Trilogy

Exam Board: AQA
Course Code: 8464

Combined Science course overview

Combined Science is a double award GCSE through AQA. Students are placed in groups according to their ability, this enables the classroom teacher to best support your child to receive the best possible support from both their teacher and their peers. In addition, a range of scientific skills will be developed and assessed. Skills are of three key categories; scientific literacy, scientific numeracy, and scientific enquiry. These skills will be assessed in the final exams. There is opportunity for movement between groups if appropriate. The three key branches of science are studied concurrently:

Biology

Life ranges in size from microscopic bacteria to towering redwood trees over 100 metres tall. All of life on Earth is composed of cells, understanding the function of these cells and their processes is essential to understanding the processes of life. Students will have the opportunity to explore the unseen microscopic world around us, follow the journey of food to fuel, and model astonishing medical breakthroughs of the 21st Century.

Chemistry

Atoms, the chemical building blocks of the universe. Atoms interact with one another to form the world around us, the range of bonds and interactions create the range and variety of the world. Students will explore how two dangerous elements can be combined to produce table salt, how scientists have developed their understanding of the atom over the centuries, and will learn to safely use acids in a range of experiments.

Physics

The modern world is reliant on effective harnessing and transfers of energy. The applications for this energy are limitless, the most common energy form we come into contact with is electrical energy. We use this every day for anything from heating food to communicating with satellites in orbit. Students will have the opportunity to quantify transfers of energy, investigate material properties to plan home renovations, and research how the world's increasing energy demands can be met.

Who is the course for?

Combined Science is the compulsory minimum of science study for all students at The City of Leicester College at GCSE level. The course is appropriate for all students, including those who wish to pursue a career in science and technology. Science skills are universally applicable and students will find they are able to apply these skills in most contexts and vocations.

How is the course assessed?

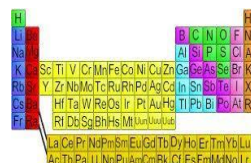
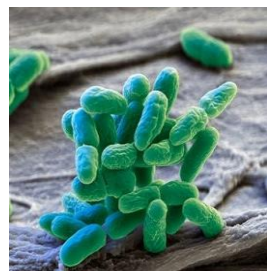
The course is assessed through six exams at the end of Year 11. Each exam is 75 minutes long, each exam has an equal weight towards the final grades.

Who can contact for further advice or support?

Ms D Vaghela, Head of Department: dvaghela@tcolc.aspirelp.uk

Mr G Clarke, Second in Department: GClarke@tcolc.aspirelp.uk

Mr Z Tariq, Second in Department: ztariq@tcolc.aspirelp.uk



Religious Studies GCSE

Exam board: AQA

Code: 8062

Religious Studies course overview

Religious Studies provides students with a unique opportunity to understand British heritage, plurality, values and futures. It also provides a space to explore their own identity, to learn to respect others, and to understand their own and others' rights and responsibilities.

"For the unexamined life is not worth living" ~ Socrates

The chosen GCSE course is an engaging and exciting introduction to controversial philosophical and ethical issues that may be encountered in the world around us. Students will engage in debates and discussions to prepare them for the extended writing they will begin later in the year. All students will study GCSE Religious Studies in Years 10 & 11, and will follow the course outlined below:

How is the course assessed?

Two written exams (50% each): 1 hour 45 minutes each.

Component 1: The study of religions: beliefs, teachings and practices. Students will explore beliefs, teachings and practices of Christianity and Buddhism in depth.

Component 2: Thematic Studies . For component 2 we are studying:

- Theme A: Relationships and families
- Theme B: Religion and Life
- Theme D: Peace and conflict.
- Theme E: Crime and punishment.

These four themes are explored from the perspective of several religious views, and allow students to apply their own beliefs to 'big questions' as well as the knowledge they have gained from their study of Christianity and Buddhism.

There is no coursework requirement.

Is this course for you?

- Religious Studies is a multidisciplinary course, meaning it covers many academic fields and skills and involves textual study, philosophical thinking, social understanding and the skills of analysis and reasoning as well as developing core skills of literacy
- students will explore issues through debates and discussions; enabling them to develop key oracy skills, and the ability to form a valid argument.

What could this course lead to?

Knowledge of other cultures and world religious beliefs can be useful in many jobs where you are working with the public or communities. These include social services, marketing, advertising, catering and hospitality, journalism, education, medicine and nursing, and many more.

You will gain problem solving skills, patience, communication and analytical skills – all of which are skills employers look for in a candidate. In short, Religious Studies can lead you anywhere!

Who can I contact for further advice or support?

Mrs L Jones, Head of Department: LJones@tcolc.aspirelp.uk



Life Skills

Life Skills course overview

Students are encouraged to be thoughtful, reflective and analytical as they explore current social and political issues that will impact them as citizens of the world. They are encouraged to explore these issues through speech, movement and debate.

Statutory requirement - Section 2.5 of the national curriculum states that all state schools ‘*should make provision for personal, social, health and economic education. In addition to this the Department for Education states pupils should receive drug education, financial education, Relationship, Health and Sex Education (RHSE) and stress the importance of physical activity and diet for a healthy lifestyle*’



	Year 10	Year 11
Autumn 1	Positive mental and Emotional health (Building resilience and recognising mental health)	County Lines (drugs, gangs and trafficking)
Autumn 2	Drugs awareness (dangers and the media)	PS16 (college applications)
Spring 1	Gender and the media (Stereotypes and gender roles)	RHSE (Sexual violence, commitment and marriage)
Spring 2	Careers (Including work experience preparation)	Financial management (Budgeting, wages and mortgages)
Summer 1	RHSE (Parenting, infertility, contraception and consent)	Healthy body, Healthy mind (Healthy eating and mental health disorders)
Summer 2	Identity (Body image & self esteem)	N/A

How is the course delivered?

Students receive 1 hour per week of PSHE education provided by a dedicated team. There is no exam or assessments in PSHE the focus is around developing individuals to be confident, well –informed, responsible citizens

Who can I contact for further advice or support?

Mrs L Jones, Head of Department: ljones@tcolc.aspirelp.uk



Physical Education (PE)

PE course overview

Students will be given the opportunity to develop cognitively, physically and socially in a series of different performance and sport related environments. Each student will be encouraged to strive for improvement, whether that be in relation to technical performance, leadership behaviours or self-esteem and confidence. The course endeavours to support each student’s pursuit of an active and healthy lifestyle whilst safeguarding their general wellbeing.

Students will receive 1 hour a week in Years 10 & 11. Throughout the year, teachers will make links across the curriculum and knowledge from subjects such as Science, Maths, English, History and Sociology will be applied to the practical performance environment.

	Y10 & Y11
Autumn 1	Options - Football, Badminton, Netball, Basketball, Tag Rugby
Autumn 2	Options - Badminton, OAA, Football, Basketball, Fitness, Netball
Spring 1	Tag Options - Fitness, Gymnastics, Football, Tag Rugby, Dance, Table Tennis, Hockey
Spring 2	Options – Hockey, Badminton, Football, Basketball, Gymnastics
Summer 1	Options – Rounders, Softball, Cricket, Handball
Summer 2	Options - Tennis, Multi-Sports, Rounders, Cricket

Assessment and feedback

Students will be assessed holistically in all lessons, with teachers looking at the Cognitive and physical skills required as well as instilling a lifelong love of sport to take into KS4 and beyond. Students will be allocated sets, based on their preference. All students who choose sport studies as an option will be in the competitive group to further support their development.



Who can I contact for further advice or support?

Ms C Myford, Head of Department: cmyford@tcolc.aspirelp.uk

Mr J Detlaff, Second in Department: jdettlaff@tcolc.aspirelp.uk

Element Two – Option Category 2:

General information

EBACC subjects – students **MUST** choose **at least ONE** from here

- Computer Science
- French
- Geography
- History
- Separate Sciences*
- Spanish

**students will need a grade 6 or above in Maths and Science in Year 9*

GCSE Computer Science

Exam Board: OCR
Course Code: J277

Computer Science Course Overview

This course will give your child a real, in-depth understanding of how computer technology works. They will also gain an insight into what goes on 'behind the scenes', including computer programming, which they will find fun, challenging and absorbing.

How is the course assessed?

2 Components:

Unit 01: Computer Systems **Exam 50%**

Unit 02: Computational Thinking, Algorithms & Programming **Exam 50%**

What will you be doing?

Currently students are learning a 01 and 02 theory content in preparation of their two exams and controlled assessment during year 11. Students will have learnt some programming in KS3 and will continue to develop a better understanding over the next two years. This will prepare them for their Unit 02 exam at the end of year 11. They will also sit their Unit 01 exam at the same time.

Is this course for you?

How many times have heard the word Algorithm? What is an algorithm? Ever wondered how Jeff Bezos and Mark Zuckerberg used Computer Science to become two of the richest men in the world? If so, this is the subject for you. Not only will you learn how the insides of a computer work but you will also learn to code; the building blocks to every website you visit, every app you use and every game you play. In this subject you will learn to combine your math skills to think logically and understand how a computer thinks and works. Intrigued? Pick this course so you can learn how to make a computer do what you want it to do.

Career Progression

Studying this course has a natural progression into A Level Computer Science. Following on from this, jobs such as Cyber security analyst, Games designer, Web designer and Software engineer are just a few exiting opportunities this path leads to.

Contact

Mr N Jamal, Head of Department: njamal@tcolc.aspirelp.uk

Mr A Lambat, Second in Department: alambat@tcolc.aspirelp.uk



French / Spanish

Exam Board: AQA
Course Code: 8652 / 8692

Modern Foreign Languages course overview

A language GCSE will open many doors. Speaking another language is a skill that many employers value and four of the UK's biggest trade partners are Francophone or Spanish-Speaking. Employers value the skills learnt by language students; comprehension, communication, improved memory, problem solving, confidence, and an understanding of other cultures.

The French language has approximately 80 million native speakers, as well as 190 million secondary speakers, meaning that around 270 million people speak the language worldwide. French is the official language in 29 countries, including international organisations such as the UN, EU, Interpol, African Union, NATO.

Spanish is the second most spoken language by native speakers in the world, with more than 400 million Spanish speakers in 21 countries. Spanish has emerged as the most important language for the UK in an analysis made by the British Council.

How is the course assessed?

- Through listening, speaking, reading and writing, including translation.
- You will have the opportunity to learn about the following themes and how they relate to Francophone and Spanish-Speaking cultures. The themes cover many different topics, so there is something to interest everyone!

Theme 1: people and lifestyle	Theme 2: popular culture	Theme 3: communication and the world around us
<ul style="list-style-type: none"> • Identity and relationships with others • Healthy living and lifestyle • Education and work 	<ul style="list-style-type: none"> • Free-time activities • Customs, festivals and celebrations • Celebrity culture 	<ul style="list-style-type: none"> • Travel and tourism • Media and technology • The environment and where people live

Is this course for you?

You have already been studying a language for 3 years and are in an excellent position to continue to GCSE especially if:

- You have been enjoying your French / Spanish lessons
- You enjoy learning about other cultures

You enjoy studying a variety of different topics and discussing your opinions

- You are keen to develop the following: being a successful independent learner, curiosity with different cultures, improve your thinking skills, increase your confidence.

You enjoy travelling or would like to travel more in the future

- You enjoy communicating with people

You are self-motivated and prepared to extend your learning beyond the classroom.

Please note, the course is for French or Spanish as a foreign language and is not suitably challenging for native speakers. Native speakers may take the GCSE as an additional exam.

FRENCH

WHERE IS IT SPOKEN?



SPANISH SPEAKING NATIONS



What could this course lead to?

The course provides an excellent progression route into A-level French or Spanish. Looking to further education, at university, you can study combined courses and some of our former students have gone on to study: French combined with Law and Spanish and Business.

The skills you will have gained are applicable to many areas of future study. You will have debated environmental issues, discussed how to improve your school, written reviews of film, and evaluated the importance of charity work. You will develop your resilience in dealing with unfamiliar language and your confidence in speaking and writing in a foreign language, and you will be taught a variety of effective revision strategies that will help you with your revision in all subjects.

Who can I contact for further advice or support?

Mrs C Camp, Head of Department: ccamp@tcolc.aspirelp.uk

Mrs F Hussain, second in Department: fhussain527@tcolc.aspirelp.uk

Geography

Exam Board: OCR B
Course Code: J384

Geography seeks to answer questions such as:

- Why does Leicester have a shortage of school places especially at primary school level?
- Leicester is one of the most congested cities in the UK. What can possibly be done about it?
- Why are new developments like the new residential extension in Hamilton so controversial?

• Geography course overview

Geography is an exciting subject that encompasses modern day issues and opens the door to a variety of options in further education. Geography gives you access to the most exotic and diverse elements of our world; from indigenous people of distant cultures, to rare species and the nature of our planet.

How is the course assessed?

Examination Paper – 1hr 15mins ‘Our World’ (35% of the GCSE)

Topics include **global hazards, changing climates, distinctive landscapes and sustaining ecosystems**. Fieldwork is an important part of this section. ICT and the use of Geographic Information Systems (GIS) are encouraged throughout this unit.

Examination Paper – 1hr 15mins ‘People and Society’ (35% of the GCSE)

Topics include **urban futures, dynamic development, UK in the 21st century and resource reliance**. Fieldwork is an important part of this component. ICT and the use of GIS are encouraged throughout this unit.

Geographical Exploration

1hr 30mins ‘Geographical Exploration’ (25% of the GCSE)

A Sustainable Decision Making exercise forms the important part of this component. This tests your ability to apply the ideas contained in the first two components to a scenario.

Is this course for you?

- Students who love learning about people and their societies, economies, cultures and the environment
- Students who are keen to learn and develop a wide range of skills
- Students who are looking for an academic degree, offering above average graduate employability.

What could this course lead to?

The course provides an excellent progression route into A-level Geography. Geography graduates are extremely employable because of the range of skills that they learn and develop. It can be a successful step into a whole world of careers such as Business, Law, Economics, Media, Politics, Tourism, Industry, the Armed Forces and the Emergency Services.

Who can I contact for further advice or support?

Mr J Van Wyk, Head of Department: jvanwyk@tcolc.aspirelp.uk

Ms I Gregory, 2ic of the Department igregory@tcolc.aspirelp.uk



History

Exam Board: AQA
Course Code: 8145

‘This is your chance to learn about the past in order to create a better future.’

History course overview

History is essential if you want to understand where we have come from and why the world is how it is today. History teaches you transferable skills which are valued by colleges, universities and employers. These include analysing a range of information; evaluating historical accounts; empathising with different groups of people; arguing a point using evidence.

Students study Britain, American and Asian history – with topics ranging from black civil rights, castle building, the formation of the NHS, and the Cold War.

How is the course assessed?

There are two exam papers, with units covering both British and International History. All exams are sat at the end of Year 11. There is **no** coursework requirement.

Paper 1: Understanding the modern world

- Section A: Period studies
 - *America, 1920-1973: Opportunity and inequality*
- Section B: Wider world depth studies
 - *Conflict and tension in Asia, 1950-1975*

Paper 2: Shaping the nation

- Section A: Thematic study
 - *Britain: Health and the People c. 1000 to Present Day*
- Section B: British depth study and the historic environment
 - *Norman England, c.1066-c.1100*

Year 10 trip to Lincoln Castle and Cathedral to support the teaching of the Norman England unit.

Year 11 Medicine Workshop to explore how medical treatments have changed throughout the years.

Is this course for you?

If you are interested in both British and world History. If you like analysing different points of view to assess how valid they are. If you enjoy discussing your ideas and arguing your point. And if you enjoy writing your ideas down in succinct and persuasive ways – then History is the subject for you!

What could this course lead to?

Historians are valued in strategic and advisory careers such as Civil Service, Public Health, and Management Consultancy. In creative industries such as Games Design and Fashion they draw inspiration from past societies. In Law they provide sharp analysis and well-argued cases and in Business they have the analytical skills and vision for development to drive their companies forward.

Who can I contact for further advice or support?

Ms S Boyd, Head of History: sboyd731@tcolc.aspirelp.uk



Norman England



The Historic Environment



The Roaring 20s



War in Vietnam



Civil Rights



Medicine and Public Health

Separate Sciences: Biology GCSE

Exam Board: AQA
Course Code: 8461

Biology course overview

Separate Science: Biology is a single award GCSE through AQA, studied alongside Chemistry and Physics. In total, a successful candidate is awarded three GCSEs in Science at the end of the course.

Life ranges in size from microscopic bacteria to towering redwood trees over 100 metres tall. All of life on Earth is composed of cells. Understanding the function of these cells and their processes is essential to understanding the processes of life. Students will have the opportunity to explore the unseen microscopic world around us, follow the journey of food to fuel, and model astonishing medical breakthroughs of the 21st Century.

In addition, a range of scientific skills will be developed and assessed. Skills are of three key categories; scientific literacy, scientific numeracy, and scientific enquiry. These skills will be assessed in the final exams.

How is the course assessed?

GCSE Biology is assessed via two exams at the end of Year 11, each exam is 105 minutes long, and have equivalent weighting.

Is this course for you?

The Separate Science course is most appropriate to those high ability students with an interest in science. Students must be prepared to work independently to ensure they are well equipped and well prepared for their exams.

What could this course lead to?

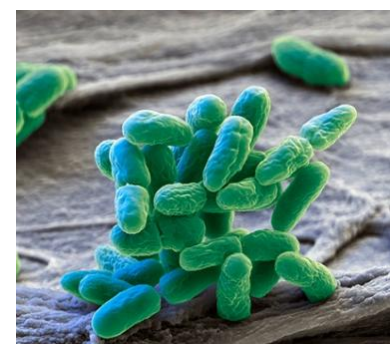
Students of Separate Science often go on to study the sciences further at A-level and beyond. A career in science is easier to attain with good grades on the Separate Science course in comparison to completing the Combined Science course. Careers in science include medicine, dentistry, pharmacy, drug development, engineering, and data analytics.

Who can I contact for further advice or support?

Ms D Vaghela, Head of Department: dvaghela@tcolc.aspirelp.uk

Mr G Clarke, Second in Department: GClarke@tcolc.aspirelp.uk

Mr Z Tariq, Second in department: ztariq@tcolc.aspirelp.uk

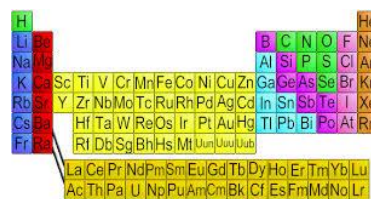


Separate Sciences: Chemistry GCSE

Exam Board: AQA
Course Code: 8462

Chemistry course overview

Separate Science: Chemistry is a single award GCSE through AQA, studied alongside Biology and Physics. In total, a successful candidate is awarded three GCSEs in Science at the end of the course.



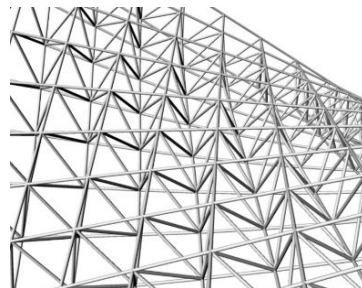
Atoms are the chemical building blocks of the universe. Atoms interact with one another to form the world around us, the range of bonds and interactions create the range and variety of the world. Students will explore how two dangerous elements can be combined to produce table salt, how scientists have developed their understanding of the atom over the centuries, and will learn to safely use acids in a range of experiments.



In addition, a range of scientific skills will be developed and assessed. Skills are of three key categories; scientific literacy, scientific numeracy, and scientific enquiry. These skills will be assessed in the final exams.

How is the course assessed?

GCSE Chemistry is assessed via two exams at the end of Year 11, each exam is 105 minutes long, and have equivalent weighting.



Is this course for you?

The Separate Science course is most appropriate to those high ability students with an interest in science. Students must be prepared to work independently to ensure they are well equipped and well prepared for their exams.



What could this course lead to?

Students of Separate Science often go on to study the sciences further at A-level and beyond. A career in science is easier to attain with good grades on the Separate Science course in comparison to completing the Combined Science course. Careers in science include medicine, dentistry, pharmacy, drug development, engineering, and data analytics.



Who can I contact for further advice or support?

Ms D Vaghela, Head of Department: dvaghela@tcolc.aspirelp.uk

Mr G Clarke, Second in Department: GClarke@tcolc.aspirelp.uk

Mr Z Tariq, Second in department: ztariq@tcolc.aspirelp.uk

Separate Sciences: Physics

GCSE

Exam Board: AQA
Course Code: 8563

Physics course overview

Separate Science: Physics is a single award GCSE through AQA, studied alongside Biology and Chemistry. In total, a successful candidate is awarded three GCSEs in Science at the end of the course.

The modern world is reliant on effective harnessing and transfers of energy. The applications for this energy are limitless, the most common energy form we come into contact with is electrical energy. We use this every day for anything from heating food to communicating with satellites in orbit. Students will have the opportunity to quantify transfers of energy, investigate material properties to plan home renovations, and research how the world's increasing energy demands can be met while responding to climate change.

In addition, a range of scientific skills will be developed and assessed. Skills are of three key categories; scientific literacy, scientific numeracy, and scientific enquiry. These skills will be assessed in the final exams.

How is the course assessed?

GCSE Chemistry is assessed via two exams at the end of Year 11, each exam is 105 minutes long, and have equivalent weighting.

Is this course for you?

The Separate Science course is most appropriate to those high ability students with an interest in science. Students must be prepared to work independently to ensure they are well equipped and well prepared for their exams.

What could this course lead to?

Students of Separate Science often go on to study the sciences further at A-level and beyond. A career in science is easier to attain with good grades on the Separate Science course in comparison to completing the Combined Science course. Careers in science include medicine, dentistry, pharmacy, drug development, engineering, and data analytics.

Who can I contact for further advice or support?

Ms D Vaghela, Head of Department: dvaghela@tcolc.aspirelp.uk

Mr G Clarke, Second in Department: GClarke@tcolc.aspirelp.uk

Mr Z Tariq, Second in department: ztariq@tcolc.aspirelp.uk



Element Three – Option Category 3:

General information

Open option subjects – all students may choose a maximum of two of these subjects.

- Business
- Creative iMedia
- Drama
- Economics
- Film Studies
- Fine Art
- Food Preparation and Nutrition
- Health and Social Care
- Music Practice
- Performing Arts - Dance
- Product Design
- Sociology
- Sport Studies / Sport Science
- Textiles
- Prince's Trust

Business GCSE

Exam Board: Edexcel
Course Code: 1BS0

Business course overview

At the beginning of year 10, you will learn the basics of how small businesses work, you will also look at the challenges facing smaller businesses and how they can stand out in a very competitive environment. You will also look at the benefits of using technology in business and the impact that it has had in recent years. In year 11, the focus will change into how businesses can grow to become large businesses. You will cover topics such as globalisation, how businesses can operate in different parts of the world, as well as looking at the legal obligations that businesses have. You will study large businesses such as Coca Cola and Amazon and see how they have developed their products and strategies to become the huge businesses that they are today.

How is the course assessed?

Paper 1 – Investigating small business

Written exam: 1 hour 45minutes, 90 marks. 50% of the total GCSE

Paper 2 – Building a business

Written exam: 1 hour 45minutes, 90 marks. 50% of the total GCSE

(Both papers consist of multiple choice, calculation, short-answer and extended-writing questions)

Is this course for you?

You will be studying:

- Marketing
- Finance
- Operations
- Human Resources

What can you do outside of lessons?

Business is everywhere in everyday life, we strongly advise you to read the news, especially business news as you will be able to relate what you have learnt in lessons to the real business world. Also as business is ever changing, it is helpful to keep track of what is happening around the world.

There will also be opportunities to take part in many business-related events in school, such as the Student Investor Challenge, where you will trade live on the FTSE and other entrepreneurial challenges.

What could this course lead to?

If you decide to study Business at university you will be in a strong position facing the graduate job market. Business students find themselves working in a range of related and unrelated sectors: international business, finance, accountancy, retail, marketing, human resources, events management.

Who can you contact for further advice or support?

Mr M Johal, Head of Department: mjohal@tcolc.aspirelp.uk



Creative iMedia

Exam Board: OCR
Course Code: J834

Course Overview

This is a Vocational qualification that takes an engaging, practical and inspiring approach to learning and assessment. Digital Media is a key part of many areas of our everyday lives and vital to the UK economy. Production of digital media products is a requirement of almost every business so there is huge demand for a skilled and digitally literate workforce.

Course Details: 3 Components:

R093: Creative iMedia in the media industry **Exam 40%**

R094: Visual identity and digital graphics **Coursework 30%**

R097: Interactive digital media **Coursework 30%**

What you will be doing?

Student will initially start work on Unit R094 Coursework. Followed R097 during year 10. As they start year 11, they will start work on Unit R093 Exam theory. This will prepare your child to undertake their exam during January of that academic year. To complete the qualification your child will complete and improve R094 and R097 to ensure they are in good standing to achieve the best possible grade they deserve. A combination of all the units will award your child with a GCSE equivalent at Level 2.

Is this course for you?

Everyone uses computers in their daily lives whether its for work or fun. So, have you wondered how apps, websites or even games are developed? Have you thought about the content you see on social media and where it comes from? Creative iMedia is a course that teaches you and provides you with an insight we often overlook. If you enjoy being creative, learning how to use new software such as Photoshop, designing and implementing your ideas, Creative iMedia is the course for you!

Career Progression

Studying this course has a progression into various Level 3 IT qualifications. Following on from this, jobs such as Graphic design, Games design, Web design and App design are just a few exciting opportunities this path leads to.

Contact

Mr N Jamal, Head of Department: njamal@tcolc.aspirelp.uk

Mr A Lambat; Second in Department alambat@tcolc.aspirelp.uk



“The arts contribute to the development of an understanding of the physical, emotional, intellectual, aesthetic, social, moral and spiritual dimensions of human experience.”

Drama course overview

During the course you will explore a variety of issues and texts and learn how to employ different dramatic genre and techniques. You will have the opportunity to attend live theatre and take part in various workshops and activities as a result of our relationships with Curve theatre and the RSC. You will also be encouraged to perform your own work to a variety of different audiences both in and outside College. You will learn how to communicate, how to plan and how to develop your critical skills through evaluation, analysis and reflection.

How is the course is assessed?

30% Devised performance and portfolio

Practical exploration of a stimulus that you complete in Year 10.

30% Scripted performance and supporting written intentions

Practical exploration and performance of 2 extracts from a play. We complete this in Year 11.

40% Written exam

Practical exploration of the set text ‘Blood Brothers’ and written preparation for the exam which consists of questions on the ‘Blood Brothers’ and a Live Theatre evaluation question on one of the performances we take you to see. You will sit this exam in Year 11.

Is this course for you?

You should give this course serious consideration if:

- You enjoy the subject or are interested in drama
- You want to develop key skills such as teamwork, leadership, communication, problem solving, creativity, innovation and taking risks
- You like to learn through practical activities
- You enjoy going to the theatre
- You want to grow as a person and build your self esteem
- You are committed and can work as a member of a team
- You are independent in your studies, are organised and can manage your time.

What could this course lead to?

We live in a fast-moving world, while employers continue to demand high academic standards, they also want more. They want people who can adapt, innovate, see connections, communicate and work with others.

Drama will teach you to think in a more divergent manner, this can be applied to any subject or any job you ever do. Skills developed in drama will help you in a variety of other GCSE subjects and careers in law, medicine, finance, communications, education, retail, business, tourism, media and politics.

Who can I contact for further advice or support?

Mrs F Wright, Head of Department: fwright@tcolc.aspirelp.uk

Mrs Hewitson-Clay, Performing Arts teacher: shewitson-clay@tcolc.aspirelp.uk



Economics GCSE

Exam Board: AQA
Course Code: 8136

Economics course overview

This exciting and interesting course will really open your eyes and challenge you to think in different ways about the world around you. The world's resources are limited but human wants are unlimited. Economics deals with this basic problem. By studying GCSE economics you will learn the economist's approach to how households, businesses and governments make difficult decisions. In your first year you will understand the basic principles in a fun and engaging way. Learning will initially develop study skills and tackle small exam questions, building up to more difficult tasks towards the final year.

How is the course assessed?

The GCSE is made up of two components, which are externally assessed. Each exam is worth 80 marks and is 1 hour and 45 minutes long.

- Paper 1: How markets work (50% of the GCSE)
- Paper 2: How the economy works (50% of the GCSE)

Assessment objectives (AOs)	Component weightings (approx %)		Overall weighting (approx %)
	Paper 1	Paper 2	
AO1	17.5	17.5	35
AO2	17.5	17.5	35
AO3	15	15	30
Overall weighting of components	50	50	100

Is this course for you?

- You will need a positive attitude and a commitment to hard work and be willing to research around concepts covered in class.
- Economics students will be numerate and acquire skills in: research, communication, team working, analysis, decision making and problem solving.
- Knowledge of economics is important to those interested in current affairs.
- Target grade should be 5 in Maths and 5 in English.

What could this course lead to?

If you decide to study Economics at university you will be in a strong position facing the graduate job market with average starting salaries that are higher than many other subjects. Economists find themselves working in a range of related and unrelated sectors: business, finance, accountancy, the civil service, management consultancy & retailing, amongst others.

Who can I contact for further advice or support?

Mr M Johal, Head of Department: mjohal@tcolc.aspirelp.uk



- The assessment objectives are:
- Knowledge & understanding (AO1)
 - Application (AO2)
 - Analysis & Evaluation (AO3)



Film Studies GCSE

Exam Board: EDUQAS
Course Code: C670QS

Film Studies course overview

Film studies is a contemporary subject that explores the medium of film in its many forms. Students will study cinema from a range of time periods and genres, and study films that have been produced across the world. If you love watching films and want to broaden your appreciation and understanding of cinema from blockbuster to independent productions, and are confident in analysing text and producing extended pieces of writing, then this is the subject for you.

Subject content

GCSE Film Studies aims to engage you in the in-depth analytical study of film in relation to the key areas of film history, film form, narrative, representation and production.

How is the course assessed?

Component 1

A study of two mainstream and one independent film produced in the USA and the history of film technology.

Assessment: a written exam, 35%

Component 2

A study of three films: one global English language film, one global non-English language film and one contemporary UK film.

Assessment: a written exam, 35%

Component 3

A production piece of a screenplay extract, a shooting script and an evaluative analysis.

Assessment: coursework, 30%

Is this course for you?

Are you passionate about media and learning about how movies get made? If you are interested in a career in the media, this option can help develop your knowledge of what goes into making a film; blending practical and analytical elements and watching a wide range of movies from all over the globe.

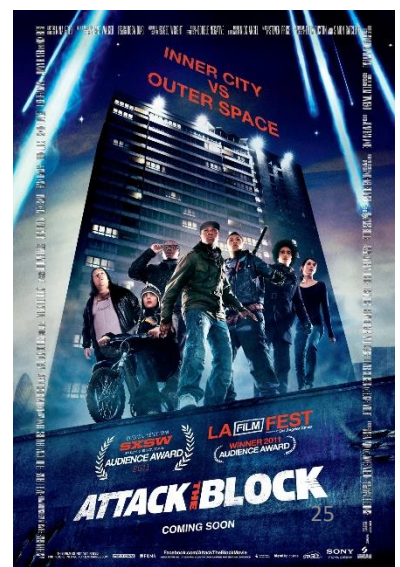
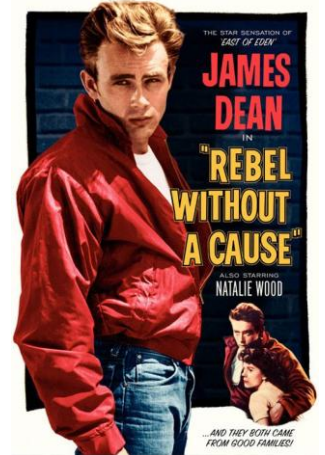
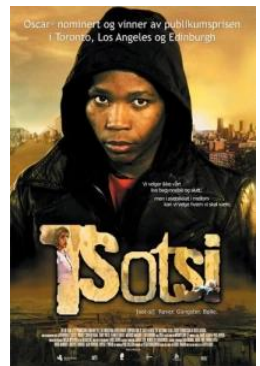
Career progression

The course provides an excellent progression route into a range of A-level subjects. You will develop essential knowledge and skills that will prepare you effectively for Media Studies, English Language and Literature, and other essay-based subjects. If you are interested in a career in Media, Film or Television, the course is an ideal starting point on your journey as it covers the essential foundations of the industry.

Who can I contact for further advice or support?

Miss S Coles Head of Department: scoles195@tcolc.aspirelp.uk

Miss M Mirza, Head of Department: mmirza@tcolc.aspirelp.uk



Fine Art course overview

This course will enable you to gain the skills and techniques necessary to create a rich and diverse portfolio of artworks. You will investigate and experiment with a wide range of media in order to express yourself through a number of techniques including drawing and paintings. From your personal research you will be encouraged to develop your own individual style that will lead to a final artwork that will become the main focus of your final exhibition. Throughout the course, you will be encouraged to demonstrate initiative and curiosity, to be visual thinkers and creative problem solvers. The study of history and theory of art is essential in developing your understanding of how fine art works on several levels.

How is the course assessed?

Component 1 – Portfolio (Controlled Assessment) 60% of the GCSE

You will create a portfolio of work, developed in response to a broad theme. You will research a range of artists and learn a variety of artistic techniques by developing compositions and drawings in the style of your chosen artist. Hopefully, this process will help build your confidence when producing a unique and innovative final piece.

Component 2 - AQA Set-Assignment (Controlled Assessment) 40% of the GCSE

You will get a set task paper in January (year 11) and choose one starting point. Preparation time of one term is given to research, plan and develop ideas and then you have a further 10 hours of supervised time under exam conditions to complete and produce your final outcome.

Is this course for you?

You should give this course serious consideration if:

- You enjoy all aspects of art including drawing, painting, photography, sculpture and mixed media.
- You spend your spare time sketching, designing & painting
- You are self-motivated, imaginative, creative and prepared to work hard.
- You can accept criticism and act on it, to improve, develop and produce work to meet high standards.

What could this course lead to?

The course provides an excellent progression route onto A-level Art & Design and other related courses and career paths including Product Design, Graphics, Textiles, Illustration, Architecture, even Art Psychology due to current mental health issues. You will develop essential knowledge, creative skills and confidence.

Who can I contact for further advice or support?

Mr M Simpson, Head of Department: msimpson@tcolc.aspirelp.uk

Miss S Coulthard, Second in Department: scoulthard@tcolc.aspirelp.uk



Food Preparation and Nutrition GCSE

Exam Board: AQA
Course Code: 8585

Food Preparation and Nutrition course overview

The first term of the course will entail building practical skills and knowledge of a wide range of cooking techniques and course topic information. You will learn knife skills, food safety, cooking methods and prepare a variety of different dishes. Some dishes you will design and plan independently based on the topic.

How is the course assessed?

YEAR 10 –

Throughout year 10 you will carry out mini projects where you gather knowledge based on food nutrition and health, different diets, designing for others, functional and chemical properties of food, food science, food spoilage and contamination and factors affecting food choices. Homework will be set within each mini project. Practical cooking will link in with each mini project whilst learning high level cooking techniques and presentation. You will also learn to carry out food science experiments and record results.

A variety of recipes suitable for all students will be cooked in double lessons throughout year 10. You must be organised with the following to cook every week:

- Record dates and buy and prepare ingredients
- Produce recipes and methods of making
- Be organised with ingredients and bring suitable containers and a bag to take food home.
- Some practical lessons will be group experimental work where ingredients is provided – testing foams, fats and viscosity

• YEAR 11 -

Coursework – Two Tasks (50% of the GCSE)

- Task 1 – Food Investigation (15%) 10 hours - September. An independent experiment task which involves a written report and practical experiments
- Task 2 – The Food Preparation Assessment (35%) 20 hours – November Year 11. A 20 page project with high level dishes cooked based on the task.

Practical exam is 3 complex dishes in 3 hours.

Written Exam – 1 hour 45 minutes (50% of the GCSE)

Is this course for you?

Are you passionate about food? Do you love cooking, preparing different foods, learning technical skills and trying new dishes? Are you ready for a challenge? If yes, then this course is for you as you will explore all of these aspects linked to food. The course has close links to science with team food practical experiments. You should also enjoy learning the theory of food and applying your food & nutrition knowledge to a wide range of activities, tasks & written exams.

What could this course lead to?

Courses & careers in the following: dietician, nutritionist, chef, food product design, sports management, hotel & catering, health and social care, sensory science, biochemist, researcher, food micro-biologist, retail & marketing

Who can I contact for advice or support?

Mr M Simpson, Head of Department: msimpson@tcolc.aspirelp.uk

Mrs A Hammonds, Second in Department ahammonds@tcolc.aspirelp.uk

Knife skills



Fresh filled pasta & sauce



Decorated pastry dishes



Speciality shaped breads



Presentation techniques



Health & Social Care

OCR Level 2 Cambridge Nationals Certificate in HSC

Exam Board: OCR
Course Code: J835

Health & Social Care course overview

OCR Health and Social Care is a work-related course. It introduces you to the employment area of health and social care and provides a good basis to progress to a more advanced work-related qualification. In Year 10, students will begin their first coursework based unit called: 'Supporting Individuals Through Life Events'. They will learn about life stages and the factors that affect them, including the impact on physical, emotional and socio-economic aspects on an individual's life. They will research service providers and professionals that can provide support and meet individual needs. Next, they will study another coursework unit, either 'Health Promotion Campaigns' or 'Creative and Therapeutic Activities'. In year 11, they will study exam based unit: 'Principles of Care in HSC settings'.



Is this course for you?

Health and Social Care is a subject for students that are interested in learning about the services, job roles, care values and potential issues that can take place in health and social care. It is for students that are considering going into a supportive, caring-related career in the future. Also, it will involve students researching and exploring Health and Social Care news as it is always changing. The majority of the coursework in health and social care are in written format so it is important that students enjoy subjects with extended writing such as English and History. We also tend to find that this subject works well alongside subjects such as Sociology.



What could this course lead to?

Studying Health and Social Care at GCSE level can make a valuable contribution for many university degree courses and to a wide variety of careers within the NHS, Social Care and Early Years including nursing and midwifery, speech and language therapy, physiotherapy, educational studies and more. You will develop many transferable skills – such as communication and presentation skills, the ability to work as a team, ICT and organisational skills, the ability to assess situations and take the right action and developing strong independent learning skills. These skills will allow you to make the transition to our BTEC course in the future, as well as providing a valuable foundation for many other subjects.



Support and Interventions available at school

- We provide various materials e.g. coursework guidance sheets/progress ladders to aid coursework tasks.
- We do our best to make ourselves available to students who seek our help. This could be at break and lunch times.



Who can I contact for further advice or support?

Ms L Patel, Head of Department: lpatel@tcolc.aspirelp.uk

Mrs S Ismail, Second in Department: SIsmail@tcolc.aspirelp.uk



Music Practice

Level 1/2 Technical Award

Exam Board: Edexcel
Course Code: 603/7055/5

Music Practice course overview

The Pearson BTEC Level 1/Level 2 Tech Award in Music Practice is for learners who want to acquire knowledge and technical skills through practical applications by studying and developing their musical skills and techniques. The qualification enables learners to develop their skills, such as using musical elements, music creation, performance and music production, using realistic vocational contexts, and their personal skills, such as self-development, responding to a brief, planning and time management through a practical and skills-based approach to learning and assessment.

How is the course assessed?

30% Exploring Music Products and Styles

Practical exploration of a variety of musical styles. Producing musical products to fit those styles

30% Musical Skills Development

Practical - Demonstrate professional and commercial skills used in the music industry and apply the development process to your personal musical development

40% Responding to a music brief

Practical – Create/compose/Produce a cover of your own! Track your progress and complete a reflection on your own musical development of the 2-year programme

Is this course for you?

You should seriously consider taking music performance if:

- You have a flair for performance or instrumental skills
- You want to develop key skills such as teamwork, leadership, communication, problem solving, creativity, innovation and taking risks
- You like to learn through practical activities
- You enjoy listening to and performing live music
- You want to grow as a person and build your self esteem
- You want to build your knowledge of music software and composition

What could this course lead to?

The course provides an excellent progression route onto a Level 3 Music Technical course and opens up various career options for the future such as a composer, producer, studio technician and many more. The course develops a broad range of highly desirable transferable skills, useful in any future employment setting, such as teamwork, problem solving, leadership and creativity.

Who can I contact for further advice or support?

Mrs F Wright, Head of Department: fwright@tcolc.aspirelp.uk

Ms J Hurdley, 2ic of Department: jhurdley@tcolc.aspirelp.uk



Performing Arts - Dance

Level 1/Level 2 BTEC Tech Award in Performing Arts; Dance

Exam Board: Edexcel
Course Code: 603/7054/3

Performing Arts - Dance course overview

This course is equivalent to one GCSE and is perfect for students who are interested in the Performing Arts industry. This course allows students to develop sector-specific applied knowledge and skills through realistic vocational contexts. During Year 10, students develop their experience and knowledge of a range of dance styles and professional pieces, including Hip Hop, Contemporary and Musical Theatre. Students develop their practical skills further by reproducing the repertoire studied, as well as researching the artistic intentions behind the piece, to ensure they are displaying the stylistic qualities required. Students then have the chance to choreograph their own group pieces in Year 11, using the given stimuli set by the exam board. This is an opportunity to display the techniques, styles and skills learnt and developed throughout Year 10.

This course is highly practical, and focuses on developing your physical skills, as well as developing an understanding of the performing arts industry.

How is the course assessed?

Exploring the Performing Arts – Component one (60 marks)

Internal written assessment. Developing an understanding of 3 dance styles and performances pieces. Creating a research portfolio to display artistic intention.

Developing Skills and Techniques in the Performing Arts – Component two (60 marks)

Internal practical assessment. Through practical workshops, develop skills and techniques whilst learning 3 different professional pieces, in 3 different styles.

Responding to a Brief – Component three (60 marks)

External practical and written assessment. Students are given an external stimulus to choreograph a group dance based on. To support their practical ideas, they must complete three essays on their ideas, skills and evaluating the entire process and final performance.

Is this course for you?

You should seriously consider taking Dance if:

- You enjoy Performing Arts (dance, drama, music, theatre etc.)
- You want to develop a range of skills such as creativity, confidence, self-esteem, teamwork, collaboration and communication
- You like to learn through practical activities

What could this course lead to?

The course provides an excellent progression route onto a Level 3 Performing Arts or Dance specific course. Either BTEC or A-Level. Performing Arts can lead you onto careers such as performers, teachers, theatre technicians, designers and many more. The course focuses on developing a range of transferable skills, to suit a range of career options.

Who can I contact for further advice or support?

Mrs F Wright, Head of Department: fwright@tcolc.aspirelp.uk



Product Design GCSE

Exam Board: AQA
Course Code: 8205

Product Design course overview

This exciting and successful course allows you to design, develop, model and manufacture a range of three dimensional designs to suit users' needs in our ever changing and diverse society.

The course, which is assessed over the two years, is arranged to encourage the development of creative skills (graphical and practical) and gives the opportunity to identify, examine and problem solve using a variety of processes and materials.

You are encouraged to work on your own ideas, investigating, planning, making, testing and marketing your products against the requirements of the design specifications and users' needs.

You will develop a broad range of skills through 'design and make' project activities relating to researching, understanding the influences of current products and historical ones, organising, team working, communicating (drawing, writing and modelling), self-reliance, ICT, CAD/CAM (Computer Aided Designing/Manufacture), innovation, problem-solving and activities related to industrial practices and the application of systems and control to manufacture in quantity. You will develop essential knowledge and skills including those involved in strategic business thinking, market research, creativity and problem-solving and manufacturing, which would be of great benefit in a variety of future careers.

How is the course assessed?

In term 1 of Y10, you will build on your experience of KS3 product design and develop the necessary skills, processes & techniques needed to enable you to complete this GCSE; this will be internally assessed by the subject teacher. In term 2 of Y10 and continued in year 11, you will be working towards completing the two components that form the GCSE.

Component 1 – Portfolio (Controlled Assessment) 60% of the GCSE

Developing and Applying Design and Manufacturing Skills.

Component 2 - AQA Set-Assignment (Controlled Assessment) 40% of the GCSE

Is this course for you?

You should give this course serious consideration if:

- You enjoy solving problems, being creative and inventive
- You spend time outside of school sketching and drawing
- You are interested in using computers, hand tools and machinery – including 3D printing
- You would enjoy modelling with a variety of different materials

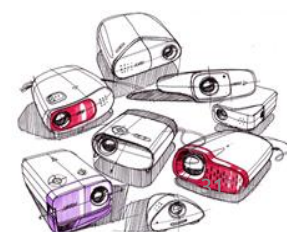
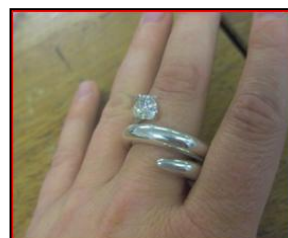
What could this course lead to?

The course provides an excellent **progression** route onto A level Art and Design/BTEC Art & Design courses **and** related career paths including Product Design, Engineering and Manufacturing qualifications, as well as Business and Science based courses.

Who can I contact for further advice or support?

Mr M Simpson, Head of Department: msimpson@tcolc.aspirelp.uk

Miss S Coulthard, Second in Department: scoulthard@tcolc.aspirelp.uk



Sociology GCSE

Exam Board: Eduqas
Course Code: C200QS

Sociology course overview

Sociologists want to understand the behaviour of people in terms of the social groups they belong to. Sociology is not just common sense as sociologists must provide evidence to support the claims they make. Students will acquire knowledge and understanding of social issues and changes.

The topics studied in Year 10 are:

- Understanding Social processes - Introduction
- Families and Household
- Education
- Research Methods

The topics studied in Year 11 are:

- Social Stratification
- Crime and Deviance



Is this course for you?

Sociology is a subject that allows students to better understand the world around them and we therefore tend to find a variety of students will enjoy this subject. In particular, students who are inquisitive and like talking about contemporary issues and what is going on in society around them, will love this subject. The exams in sociology are in written format so it is important that students enjoy subjects with extended writing such as English and History. We also tend to find that this subject works well alongside subjects such as Geography, Drama and Health & Social Care.



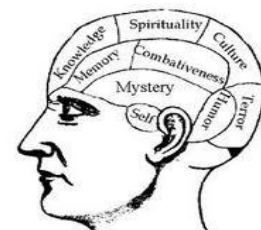
What could this course lead to?

Those who study Sociology can go onto a wide range of occupations in the future. This can lead to careers in social services, education, criminal justice system, welfare services, government, counselling, charities and the voluntary sector. They include occupations such as a charity fundraiser, community development worker, counsellor, lecturer, housing officer, teacher, probation officer, social researcher, social worker and welfare rights adviser. Furthermore, many businesses and organisations are now more interested in the links they have with their local communities and wider societies. This makes Sociology an ideal subject to study for all occupations, as organisations seek out employees who have an understanding of societal issues to further strengthen their bonds with their local communities and clients. There are a range of skills you will gain by studying Sociology, with many of them being transferrable for other occupations also, meaning studying the subject will not limit your future career choices, but in fact add to the skillset you need for many professions in the future.



Support and Interventions available at school

- We provide various materials to aid students learning and our lessons are designed to help them develop interest in the subject and to become independent learners.
- We do our best to make ourselves available to students who seek our help. This could be at break and lunch times.



Who can I contact for further advice or support?

Ms L Patel, Head of Department: lpatel@tcolc.aspirelp.uk

Mrs S Ismail Second in Department: Sismail1@tcolc.aspirelp.uk

Mrs Fatima Yaqub-Ghanchi Sociology Teacher: FYaqubGhanchi@tcolc.aspirelp.uk

Sport Studies

OCR Cambridge National Certificate in Sport Studies / Sport Science

Sport Studies

Sport, health related fitness and Sports Science is a fast evolving industry that is creating lots of opportunities in a variety of different roles. Studying a sport related course at KS4 will help you to develop a better understanding of the human body in action as well as develop a variety of skills from communication, coaching, presenting, evaluating and practical performance. The course provides a good foundation for both post-16 progression or employment and can be chosen in addition to the mandatory Core PE lessons. By choosing this option, you will be studying sport studies at KS4.

How is the course assessed?

Through a combination of an external exam and internally assessed coursework covering 3 units, over two years.

Sports Studies:

- **Unit Ri84:** Contemporary Issues in Sport. **Externally assessed exam.**
- **Unit R185:** Performance and Leadership in Sports Activities.
- **Unit R187: Outdoor and adventurous activities**

With a strong emphasis on scenario-based learning, students are given the opportunity to display their knowledge and understanding in a variety of contexts that challenge and extend their learning.

All coursework completed over the two years, along with the external exam, will be used to determine the overall grade achieved for the course. The meeting of assignment deadlines throughout Year 10 and 11 is an integral factor in maximize final course outcomes.

Is this course for you?

If you are passionate about playing sport and want to learn more about how sport is organised in this country, how the media influences what we watch, understand and explore a variety of outdoor and adventurous activities and how elite performers train, compete and think, then this is the course for you!

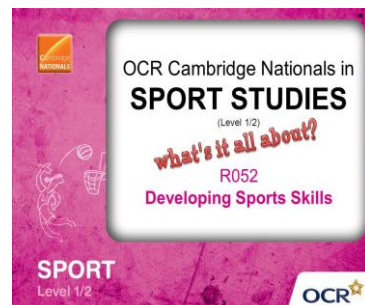
What could this course lead to?

Firstly, you could continue your studies in Sixth Form and study a Level 3 Sports course. After this you could begin to transition into Higher Education or an apprenticeship, working towards a career as a Physiotherapist, Sports Journalist, Sports Psychologist, Nutritionist, Police, Biomechanic, Sports Development, Coach or Teacher.

Who can I contact for further advice or support?

Ms C Myford, Head of Department: cmymford@tcolc.aspirelp.uk

Mr J Dettlaff, Second in department: jdettlaff@tcolc.aspirelp.uk



Textiles GCSE

Exam Board: AQA
Course Code: 8204

Textiles course overview

This course provides students with the opportunity to learn and develop a range of skills including felt making, hand and machine embroidery, various methods of print, surface decoration and fabric manipulation.

Throughout the course, you will be encouraged to demonstrate initiative and curiosity, to be visual thinkers and creative problem solvers.

How is the course assessed?

Component 1 – Portfolio (Controlled Assessment) 60% weighting

This involves designing and making quality textile products and creating a supporting folder of investigative and exploratory work, in response to an initial starting point. The work relates to commercial practices, learning from other artists/designers, and recording all stages of the designing and making process.

Component 2 – Set-Assignment (Controlled Assessment) 40% weighting

You will receive a set-task paper in January of year 11 and select a starting point from. Preparation time of one term (12 weeks) is given to research, plan and develop ideas, finishing with 10 hours of supervised time in exam conditions to complete and produce their final outcomes.

Is this course for you?

You should give this course serious consideration if:

- you have a real interest and passion for textiles.
- you are self-motivated and prepared to carry out your own research and investigations, putting in time at home to further develop samples and sketchbook work
- you can employ analytical thinking and be creative and innovative when designing
- you are imaginative, creative and enjoy using a range of media
- you are willing to take risks, make mistakes and have fun exploring the world of design!

What could this course lead to?

The course provides an excellent progression route onto A level Art and Design courses and related career paths including textiles and fashion design related industries: knitwear, printmaking and surface pattern, interior design, costume/theatre design, textile art, accessories and millinery.

Who can I contact for further advice or support?

Mr M Simpson, Head of Department: msimpson@tcolc.aspirelp.uk

Miss S Coulthard, Second in Department: scoulthard@tcolc.aspirelp.uk



Prince's Trust ACHIEVE Programme

General information

The Prince's Trust ACHIEVE programme is a personal development course which helps young people to unlock their potential and encourages them to take responsibility for their own learning and development. The course aims to encourage you to develop skills in a range of areas including teamwork, enterprise and community projects.

How is the course assessed?

This course is very hands on and involves portfolio & evidence building and then they will be internally & externally assessed by the Prince's Trust. There are no exams involved.

You will be assessed through what you can demonstrate in terms of skills and understanding. This will normally be kept in a portfolio of evidence which might include videos and photos of your performance as well as written evidence.

The course is particularly aimed at solving problems and preparing you for life after education with an emphasis on:

- Career Planning
- Teamwork
- Managing Money
- Community Impact
- Digital Skills
- Experiencing the World of Work
- Wellbeing
- Presentation Skills

And many more.

Who is it for?

You should give this course serious consideration if:

- You enjoy working in a team and trying to improve your skills
- You are keen to develop your self confidence
- You can be creative and innovative when trying to solve problems
- You want to develop skills that will help you in the world of work, in particular skills such as CV writing, interview preparation or
- looking at career options.

Progression?

The programme is run over two years where you can achieve a **Personal Development Qualification** at either an **Entry level 3, Level 1 or Level 2 certificate** by developing the skills and attitude required for the workplace or College. The ACHIEVE programme bridges the gap between employers and students.

Statistics show that over 90% of young people following this course, go on to further education, employment or training and 95% of students would recommend the course to others.



Prince's Trust



**COMING TOGETHER
IS A BEGINNING.**

**KEEPING TOGETHER
IS PROGRESS.**

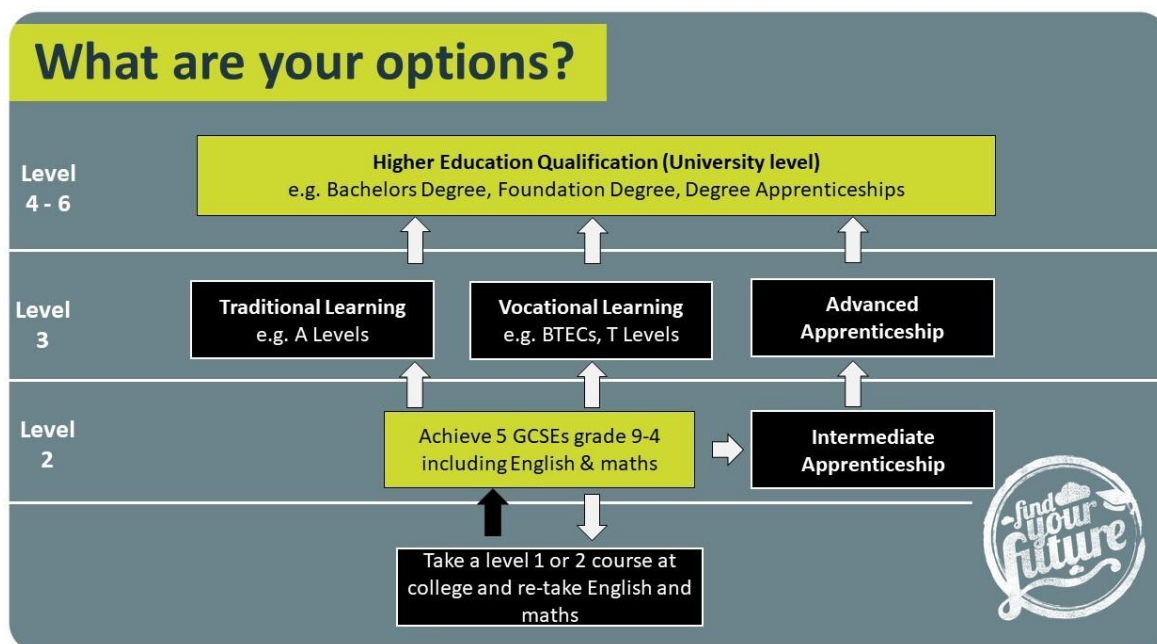
**WORKING TOGETHER IS
SUCCESS.**

Who can I contact for further advice or support?

Mr W Drury, Assistant Headteacher: wdrury@tcolc.aspirelp.uk

Looking Ahead to Post-16

When choosing your GCSE/L2 options it is important that you bear in mind where you want your subjects to take you in the future. There are many various potential pathways for your Post-16 education:



Here at TCOLC we have a thriving Sixth Form who have an excellent track record of delivering A levels and BTEC courses. Most students who graduate from our Sixth Form enter University education. As a Yr9 student at TCOLC we are already looking forward to welcoming you into our Sixth Form. You can find all the information about our courses and provision here:

<https://www.cityleicester.co.uk/sixth-form/>

Some key points about our Sixth Form:

- Personalised curriculum
- Small class sizes
- Expert Post-16 teaching
- Nationally recognised results
- Dedicated support for potential Oxbridge / Medical students
- Close links with local universities
- Specialist careers education and guidance
- Dedicated sixth form mentor and extensive pastoral support
- Work experience opportunities
- Extensive enrichment programme
- Positive student feedback

Careers

Hello Year 9!

Choosing your options marks the start of your career path. I know that sounds daunting but don't worry. It is not important right now that you are 100% sure of the exact job you would like to do in ten years time. In fact, that would probably be an impossible task; many of the job roles you will end up taking have not even been invented yet! However, by taking advantage of all the available information that is available to you can start to plot your way forward.

When you are starting to career plan, it is helpful to be more aware of the broad range of different roles across sectors of work, and any work trends. This is known as Labour Market Information (LMI). If you follow the link on this page you will find a booklet called "World of Work Leicestershire", this contains all the LMI on the employment market in our area. The Covid-19 lockdown has affected both the local and global world of work and we still do not know the long-term impact; this guide focusses on a broad range of sectors, some of which are growing, to help you to be more aware of potential local opportunities. Leicester and Leicestershire have some large businesses with a base here, such as IBM, Amazon, Hastings Direct, Next, 3M, Caterpillar, Triumph, Dunelm, Santander and Samworth Brothers. Along with well-known names, there are thousands of micro, small, and medium sized employers, who may have career opportunities. With just over 550,000 jobs in the area and 48,000 registered businesses, read on and explore the local world of work.

The link to the WOW booklet:

[LLEP WORLD OF WORK LEICESTERSHIRE](#)

Best wishes,

The City of Leicester College Careers Team

